

# PFLAG NEW ORLEANS BANNER

## September 2017 EDITION

Vol 17 Issue 9

### In This Issue

Meeting Dates

PFLAG Needs You - Join or  
Renew Your Membership

Fun Home- A Musical

WHIV 102.3 FM

Acclaim Awards Gala

Chevron NO/AIDS Walk

Auditions for LGBTQ Youth

Evangelical's Influence on  
Public Policy

Save the Date -Oct 11- The  
Sunday Sessions

Amazon Smile

PFLAG National Convention

A Creative Corner of New  
Orleans

PFLAG Mission

### Quick Links

[PFLAG New Orleans Website](#)

[PFLAG National](#)

[PFLAG National Blog](#)

[Straight For Equality](#)

[PFLAG's Safe Schools  
Information](#)

[PFLAG's Issues and  
Advocacy Information](#)

[LGBT Community Center of  
New Orleans](#)

[New Orleans Gay Men's  
Chorus](#)

Greetings!



Message from Julie:

Please join us at the NO/AIDS Walk on Sunday, Sept 24 at Crescent Park. That's right! This year the walk will have a new location. Crescent Park is along the River in the Marigny. As usual, we will be in the Individual Registration booth. So come see us and have a good time. We will be looking for you!

Julie

Message from Joe:

First, I want to thank all of those lovely people who came to our dining out social evening last month. A big THANK YOU to Louisiana Pizza Kitchen Uptown for hosting us and donating a percentage of the receipts to PFLAGNO. Next, I want to welcome three new Board members, Alberto Oliver, Shane Steinkamp and Marcus Stein. They each bring lots of knowledge, experience, expertise, and excitement to the Board and we are so pleased to have them with us. There are a number of events coming up this month so please read the rest of the newsletter and either participate or help spread the word. We also are working on hosting a special showing of a film "Sunday Sessions", which deals

[Raising My Rainbow](#)

[WHIV FM Radio ON LINE](#)

with conversion therapy, on October 11<sup>th</sup>, which is National Coming Out Day. So save the date, details will be forthcoming. Look forward to seeing you at the NO/AIDS WALK, it is in my neighborhood this year.

Joe

## Meeting Dates



Our **September** and **October** meetings are scheduled below.

### New Orleans (Second Thursday of Month)

**Date:** Thursday, **September 14, 2017**

**Date:** Thursday, **October 12, 2017**

**Time:** 7:30 PM

**Place:** Congregation Gates of Prayer Synagogue

**Address:** 4000 W. Esplanade Ave. S.

**(West Esplanade & Richland Street)**

**Metairie, LA 70002**

(Park in lot on Richland Street)

[To view a map showing the meeting location, click here](#)

### Northshore (Third Thursday of Month)

**Date:** Thursday, **September 21, 2017**

**Date:** Thursday, **October 19, 2017**

**Time:** 7:00 PM

**Place:** North Shore Unitarian Universalist Society

**Address:** 28662 Krentel Rd. Lacombe, LA 70445

[To view a map of the Northshore meeting location, click here](#)

## Annual Membership Campaign



**BE A PART OF US...**

**Join or renew your  
membership in  
PFLAG New Orleans  
for 2017-18**



*PFLAG New Orleans*, part of the national PFLAG organization, is one of the oldest organizations serving the LGBTQ community in the New Orleans area. We promote the health and well-being of gay, lesbian, bisexual and transgender persons, their families and friends.

And we need your help! Join us, today at

**[www.pflag.org](http://www.pflag.org)**

CELEBRATING FAMILY  NEW ORLEANS STYLE

Membership runs October 2017 through September 2018.



Renew Your Membership For October 2017 through September 2018 or Become a Member

We encourage you to renew your membership or join us by paying your membership dues.

**We thank those who have renewed their memberships.**

**WE NEED YOUR SUPPORT!  
BECOME A MEMBER.**

**Student \$20  
Individual \$35  
Family \$50**

Some ways you can continue to support PFLAG follow:

- Renew your membership
- Participate in the support meetings
- Volunteer to work at PFLAG-sponsored events
- Support our educational and advocacy efforts to provide safe schools for all students
- Support our advocacy efforts with the State Legislature
- Support our Scholarship Program and annual Scholarship Reception
- Make a donation

[Download our Membership Form Here](#) And Return it By Mail

OR

[Click Here To Pay Your Dues Online](#)  
via our secure site using a credit card.

Our chapter is proud to be a part of the PFLAG National organization. With local affiliates in more than 500 communities across the United States and abroad and over 200,000 members, PFLAG is the largest grassroots-based family organization of its kind. It is a nonprofit organization and is not affiliated with any religious or political institutions.

We have continued our scholarship program. This will be our 28th year of giving scholarships to LGBT students. We have given close to half a million dollars so far! We have reached \$500,000 in total scholarships awarded. But we could not do it without you!

Some of our other accomplishments are listed below.

- Host a weekly radio program on local radio station WHIV 102.3 FM
- Made presentations to area high schools, colleges and universities informing them of the resources PFLAG has available to them and addressing issues of Bullying in schools
- Monthly online chapter newsletter - the BANNER
- Volunteered and staffed the registration tent at the NO/AIDS Walk each year
- Support Gay-Straight Alliances at individual schools when asked
- Collaborated with other area organizations in the Community Coalition
- Hosted the PFLAG Southern Regional Conference in the fall of 2016.

Our chapter is funded entirely by members' dues and donations from concerned individuals and foundations. We do not receive funds from the national organization.

I am asking you to renew your membership or to officially become a member of PFLAG New Orleans by paying your dues via our secure site using a credit card. You may also [download the membership form](#) and mail it to:

**PFLAG New Orleans**  
**P.O. Box 15515**  
**New Orleans, LA 70175**

Fifteen dollars of every membership is dedicated to support the efforts of the PFLAG National Organization.

Benefits include a twice-yearly copy of the PFLAGpole newsletter, access to significant discounts on publications, discounted registration to PFLAG national conventions, and the opportunity to be included in PFLAG's voice on Capitol Hill. In addition, you will receive our chapter's monthly electronic newsletter, the Banner.

Because of the courage and generosity of our members, we will be able to continue our important work.

Note that you can also pay your dues by clicking on the link below.

[Click Here To Pay Your Dues Online](#)

**Fun Home - A New Musical**

**Presented in partnership with New Orleans Center for Creative Arts**

As we approach the opening date for this new musical, we will provide additional information.



**SEPTEMBER 27 - OCTOBER 22**

---

Regional Premiere

**FUN HOME**

Book and Lyrics by Lisa Kron

Music by Jeanine Tesori

Based on the graphic novel by Alison Bechdel

Directed by Blake Coheley



**Performances: 7:30 PM (Sunday Matinees 3:00 PM)**

Presented in partnership with NOCCA Stage Company at New Orleans Center for Creative Arts

NOCCA Nims Black Box Theatre

2800 Chartres Street

New Orleans, LA 70117

When her father dies unexpectedly, graphic novelist Alison dives deep into her past to tell the story of the volatile, brilliant, one-of-a-kind man whose temperament and secrets defined her family and her life. In this Tony Award-winning musical, Alison moves between past and present, reliving her childhood spent playing at the family's funeral home, her collegiate sexual awakening, and her confrontations with the looming, unanswerable questions about her father's hidden desires.

TICKETS CURRENTLY AVAILABLE AS PART OF YOUR 2017-18 PRIORITY PATRON MEMBERSHIP AND SEASON SUBSCRIPTION! Pick Four or enjoy All Access Five-Play Memberships. Priority patrons enjoy numerous benefits, including the chance to buy additional guest tickets at a discounted price before sales open to the public! [LEARN MORE.](#)

FUN HOME single tickets go on sale to the general public on September 5, 2017.

This production is supported in part by a grant from the New Orleans Theatre Association (NOTA).

---

**S P E C I A L E V E N T S**

**September 30** Priority Patron Appreciation Performance

**October 1** Priority Patron Appreciation Performance

**October 2** Priority Patron Appreciation Performance - Opening Night!

**October 5** Pay What You Can Performance

## WHIV 102.3 FM - PFLAG's Expanding the Rainbow Programs



Our radio broadcasts are archived so that you can listen to them at your convenience, once our new website is completed.

**The Website Is Under Construction Again!**

**Live Streaming Is Back!**

The good news is that WHIV LP 102.3 FM is live streaming again at [www.whivfm.org](http://www.whivfm.org). What that means to you is that you can listen to the unique programming of this independent voice. And of course, PFLAG New Orleans - Expanding The Rainbow is on every Thursday morning from 8:00 - 9:00 AM

Shows before the next month's edition of the Banner will be:

Basically we are going to admit that scheduling for volunteer broadcasts is an extremely challenging thing to do.

September 14 - Vicki Weeks from Belle Reve

September 21 - Sally-Ann Roberts, WWL-TV This is a show that everyone needs to hear - a positive message about how religion and the LGBTQ Community can support each other. We had to record this interview with Sally-Ann Roberts - she has a conflict at our air time - she's on the air! We will be talking about acceptance of an LGBTQ family member in a deeply Christian family. This was recorded the day before the incidents in Charlottesville.

The archives are coming - that is the latest word, it will be discussed a bit more and the exact how for you to access them will be published as soon as all of that information becomes available.

2017 Acclaim Awards Gala - Saturday, September 23



Saturday, September 23  
InterContinental New Orleans  
444 St Charles Avenue  
New Orleans, LA 70130

[Tickets Available Here](#)

Patron Welcome Reception  
5:00 PM to 6:00 PM

Dinner, Auction and Accolades  
6:00 PM to 10:00 PM

Acclaim Award Recipients  
**Leadership**  
New Orleans Pelicans  
**Advocacy**  
Councilmember-at-Large Jason Williams  
**Health Care**  
Dr. Jamie Buth

Chevron NO/AIDS Walk - Sunday, September 24



**NOW AT CRESCENT PARK!**



[Register as an Individual or Team Here](#)

Volunteer with PFLAG New Orleans to Assist at the Individual Registration Tent



## Registration and WALK Information

**8:00 am** Registration near the elevator at the Mandeville St Wharf of Crescent Park

**8:30 am** Music and performance by the Disco Amigos

**9:00 am** Welcome messages

**9:30 am** Warm up led by the Disco Amigos

**9:45 am** Performance by the Gay Men's Chorus

**10:00 am** WALK Begins

**10:30 am - 1:00 pm** Festival For Life

**11:00 am** Drag Queen Story Time

**11:15 am** Awards Ceremony

The Festival For Life is a component of the Chevron NO/AIDS WALK that celebrates those living with HIV/AIDS. It combines information on healthy living as well as family fun. Stay and enjoy live music, visit our information tents on healthy living, or get an airbrush tattoo. Snowballs, beer and other concessions will be available.

**LGBTQ Youth and Allies - Auditions For LOUD - Sign Up By September 13**



We are an ensemble of LGBTQ and allied youth who create art together. All of our members are paid!

Auditions will be held on Saturday, September 16

To sign up email [neworleansqyt@gmail.com](mailto:neworleansqyt@gmail.com) or text 510-301-2799.

For more information about LOUD visit [noqyt.org](http://noqyt.org)

PFLAG New Orleans has been asked to spread the word to LGBTQ youth and allies looking for creative ways to explore identity, gender and sexual orientation

LOUD is an ensemble of queer & trans\* youth (and allies), ages 13-21. They create original performances based on our own experiences and our imaginations.

Here's a short video of their first show, [Beyond Acceptance](#), which played to sold out crowds in New Orleans and toured to Alternate ROOTS in North Carolina. All of their work comes out of

our core values of devised theater, undoing oppression and solidarity, and **all of their members are paid** for their contributions.

They are holding auditions for new ensemble members on Saturday, September 16. See information below. Also see their [FaceBook](#) page. **Transportation is available.**

**To sign up for auditions, young people need to contact Rachel Lee, by texting 510-301-2799 or emailing [rachelelee@gmail.com](mailto:rachelelee@gmail.com) by Wednesday, September 13.**

### The Evangelical's Influence on Public Policy

Last week, a group of the country's most prominent evangelical figures released a document condemning lesbian, gay, bisexual and transgender people and those who affirm them in what they called the [Nashville Statement](#).

Let's take a closer look at the influence that the evangelical's are having on public policy in the current administration.



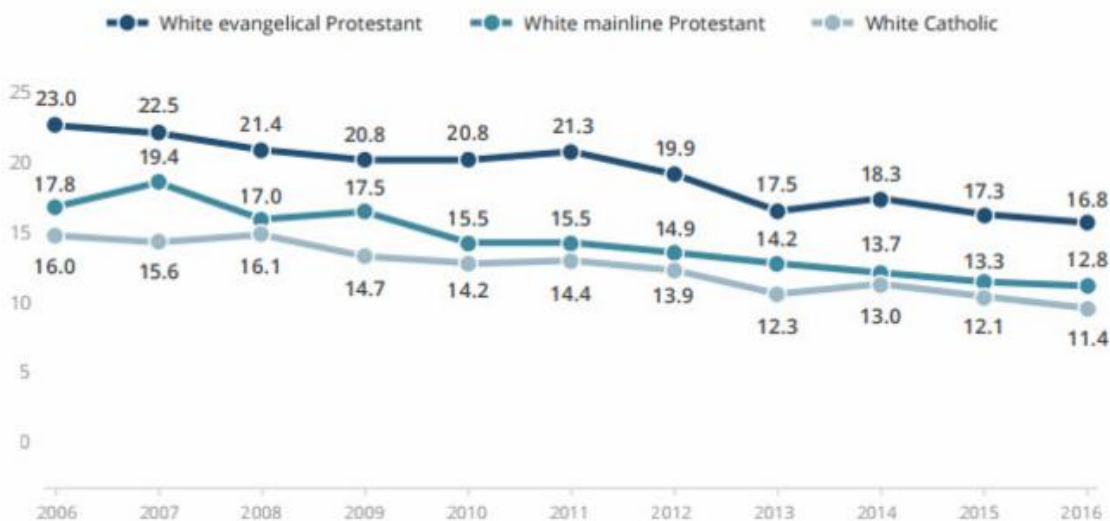
White evangelical Protestants remain the dominant religious force in the GOP. More than one-third (35%) of all Republicans identify as white evangelical Protestant, a proportion that has remained roughly stable over the past decade. Roughly three-quarters (73%) of Republicans belong to a white Christian religious group.



## The Decline of White Evangelical Protestants

Although much of the research on religious decline has focused on losses among white mainline Protestants and white Catholics—groups with well-documented declines—much of the public discussion on religious change has missed one of the most important stories of the last decade: The decline of white evangelical Protestants.

**FIGURE 5. The Decline of White Christians, 2006 - 2016**



Sources: The Pew Research Center for the People & The Press and Pew Forum on Religion & Public Life, Religion and Public Life Survey, 2006-2009; PRRI 2010 American Values Survey; PRRI/Brookings 2011 Pluralism Survey; PRRI 2012 American Values Survey; PRRI 2013-2016 American Values Atlas.

<sup>10</sup> For a longer discussion of this trend and its implications, see Robert P. Jones, *The End of White Christian America* (Simon & Schuster, 2016).

<sup>11</sup> The Pew Research Center for the People & The Press and Pew Forum on Religion & Public Life, Religion and Public Life Survey, July 2006.

White evangelicals managed to avoid the first wave of white Christian decline in the 1990s and into the early years of the 21st century. But between 2006 and 2016, the proportion of white evangelical Protestants has fallen six percentage points, from 23% to 17%. White Catholics experienced a similar decline in membership, dropping five percentage points from 16% in 2006 to 11% in 2016. White mainline Protestants also experienced significant losses during this period, dropping from 18% in 2006 to 13% in 2016.

For additional insights, please take the time to read the following articles.

[The Nashville Statement: Maybe the issue isn't the issue](#)

[Evangelicals are killing LGBTQ youth from the inside out - soul first](#)

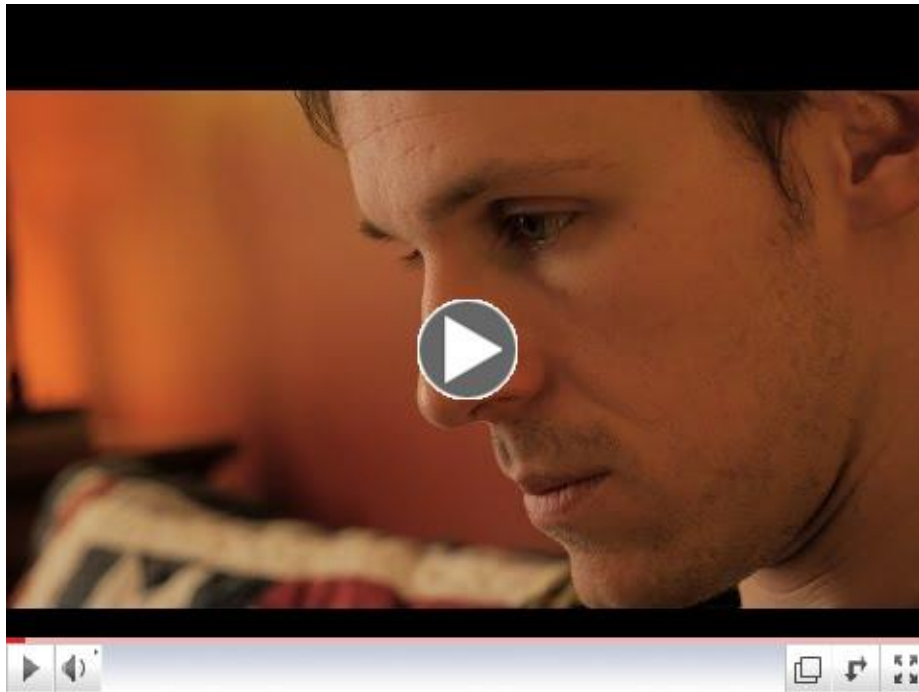
[America's Changing Religious Identity, Daniel Cox, Ph.D., Robert P. Jones, Ph.D., 09.06.2017](#)

[Trump's evangelical advisers discussed transgender ban at White House meeting](#)

[All the president's clergymen: A close look at Trump's "unprecedented" ties with evangelicals](#)

Save The Date - October 11 - Special Viewing of *The Sunday Sessions*

PFLAG New Orleans is planning to host a special viewing of *The Sunday Sessions* on Wednesday, October 11. We will provide additional information when our plans are finalized. In the meantime, save the date on your calendar.



A religious young man  
called into question w  
sexual re-orientation

A documentary directed and produced by Richard Yeagley.

THE SUNDAY SESSIONS is an intimate portrait of one man's struggle to reconcile his religious conviction and sexual identity. The feature length documentary follows Nathan Gniewek, a gay man in his late twenties, as he seeks counseling from conversion therapist Christopher Doyle. Conversion therapy is the controversial, non-scientifically based process which aims to convert an individual's sexual orientation from homosexual to heterosexual. Although it has been discredited by all major American medical, psychiatric, psychological and professional counseling organizations, some therapists still offer the service for reasons almost exclusively rooted in a conservative religious belief system.

The filmmakers had unfettered access to individual therapy sessions, family sessions, and a collection of weekend camps, and have crafted an emotional and psychological thriller which chronicles two years of Nathan's journey from acceptance to skepticism, all leading to a profound epiphany.

Designate PFLAG New Orleans as your Amazon Smiles Charitable Organization



Consider designating us as your charitable organization.

When you #StartWithaSmile on #PrimeDay, Amazon donates to Parents and Friends of Lesbians and Gays New Orleans. Shop for great deals at [smile.amazon.com/ch/58-1706391](https://smile.amazon.com/ch/58-1706391).

amazon smile

You shop. Amazon gives.

## PFLAG National Convention - October 20 - 22 - Portland, OR

Join us in Portland.

PFLAGers and equality advocates from across the country will converge in Portland, OR in October 2017 for our biannual national convention. *The theme is **We Are the Change**.*

The event is hosted at the Portland Marriott Downtown Waterfront. Marriott International has been a longtime supporter of PFLAG, and committed partners in the fight for equality and the goal of creating and maintaining a strongly diverse and inclusive workplace...and world.

Together we will learn new skills, build relationships, and shape the future of the movement for LGBTQ equality.

Registration is open to all PFLAG members and supporters.

**\$225.00 Member Regular**

**\$300.00 Non-Member Regular**

[Additional convention information is available here](#)



## A Creative Corner of New Orleans



### **You Can't Go Home Again...Or Can You?**

**by Sally Michelle Jackson**

This weekend I put that old adage to the test by going to my old home town for a little Birthday celebration with some of my old friends. I drove to East Texas to visit my sister on Friday night and then on to Fort Worth, Texas on Saturday morning. It was not only a chance to visit with old friends but to satiate my hunger for Tex-Mex food. Saturday's lunch was with one of my old friends from my record store days, actually the man who trained me on the job. It was a great visit and we decided to do this again as soon as possible.

I checked into my motel and managed to watch my Alma Mater (TCU) beat the Arkansas Razorbacks and then it was on to another Tex-Mex dinner with three of my old TCU Band Friends, another great visit and talk of doing this again soon.

Sunday morning came and I had the free breakfast in the lobby, complete with state of Texas shaped waffle. Everyone was being so friendly, I was never misgendered during the entire trip. I met my friend at Fuzzy's Tacos for moore Tex-Mex before he and his wife took me to the Texas Ranger's Game (apparently the Ranger's players didn't have tickets - I have no idea who those people on the field were, but they didn't seem to be professional ball players). I had taken my cane with me and even though they had an amazing parking spot, on the way out of the stadium a man came up to me and asked, "Ma'am, would you like a ride to your car?" It was warm, I was tired so we rode to the car. Age has a few perks. Sunday night and with nothing planned I bought a Whataburger and watched the Cowboys do what the Ranger's couldn't - Beat a team from New York!

Monday morning I started for home with another stop in East Texas to visit my sister for another night. It seemed like such a perfect trip but it doesn't really answer the question completely. I think that you can go home again, but it's best if it is just for a visit.

## PFLAG's Mission Statement

**Our Mission.** By meeting people where they are and collaborating with others, PFLAG realizes its vision through:

**Support** for families, allies and people who are LGBTQ

**Education** for ourselves and others about the unique issues and challenges facing people who are LGBTQ

**Advocacy** in our communities to change attitudes and create policies and laws that achieve full equality for people who are LGBTQ -

See more at: <http://community.pflag.org/page.aspx?pid=237#sthash.FTJoAk0u.dpuf>

